



XPOD-SS 3D Laser Full-Foot Scanner

2021.02.04

Fast true 3D laser scan of both feet with color texture.

Auto landmark, measurement, and diagnostic

Custom shoes and orthotic insoles for foot clinics and retail stores

www.scanpod3d.com

XPOD-SS supersedes UPOD-SS and UPOD-DUO



UPOD-SS vs XPOD-SS



XPOD-SS

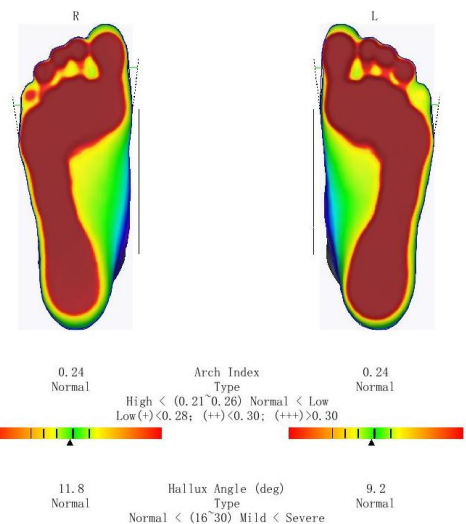
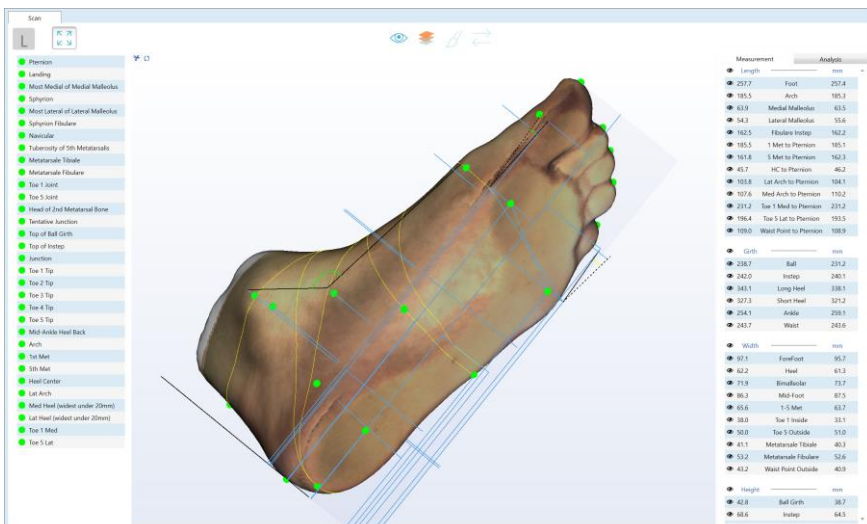
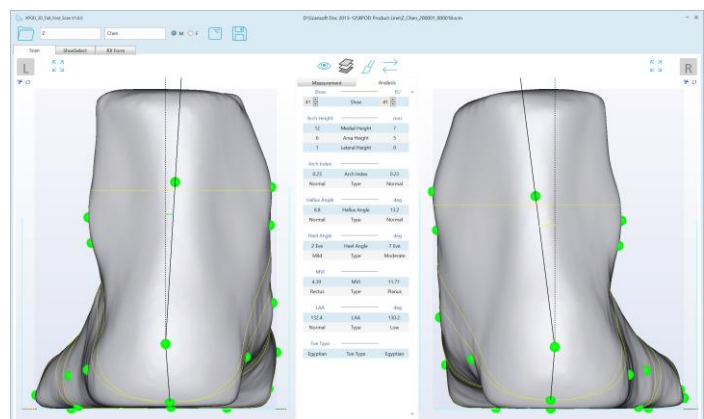
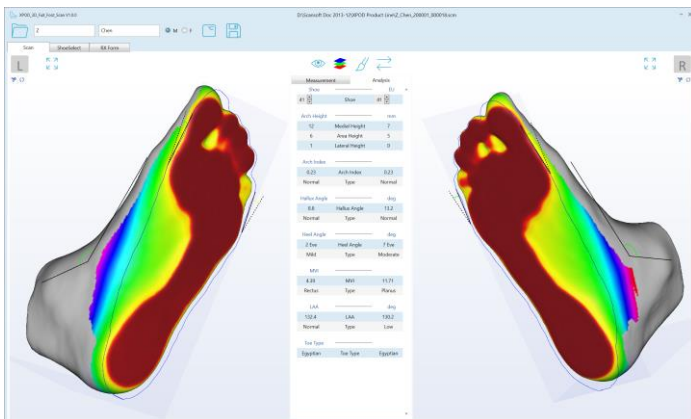
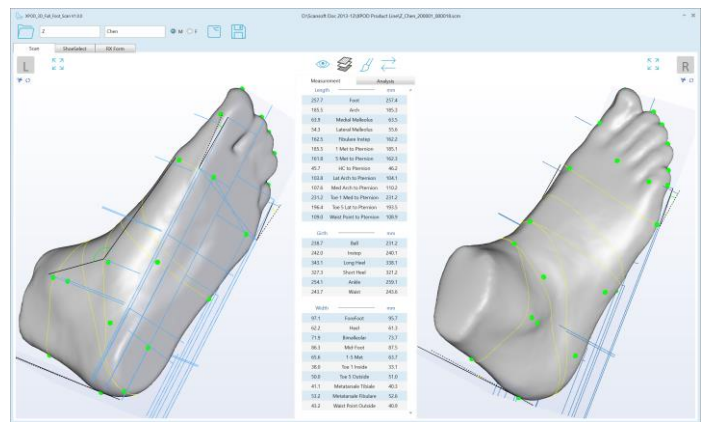


XPOD-SS



XPOD-SS

XPOD Software UI is elegant, intuitive, and highly customizable



XPOD-SS Hardware

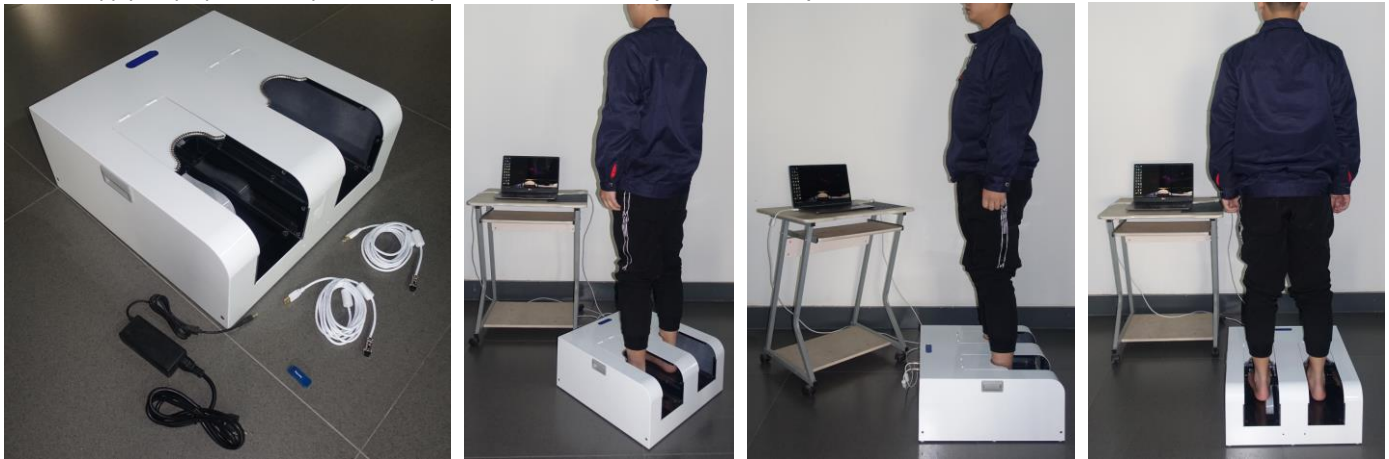
- Full-foot dual-foot 3D with color non/semi/full-weight
- Foam Impression and Casts; shoe last within 330mm
- Speed 3.2s one-way for 3D for both feet
- PC i5-6200U 8G minimum; i5-8250U/1135G7 16G better
No requirement on GPU. Integrated GPU OK
At least 2 separate USB2.0 -A or -C ports
- Normal indoor lighting, no dark room
- Clean 3D mesh, +/- 1.0mm accuracy
- Scan Volume 330L X 130W X 115H mm
- Size: 520L X 510W X 220H mm
- Weight: 16.5Kg (37Lb)
- Load Capacity: 180 Kg (400Lb)
- Power adapter AC 100-240V; DC 12V/5A
- Customizable panels design and color
- CE/FDA/PSE/BIS certification/registration
- One-year limited warranty

Standard XPOD Software

- Win10 only, doesn't support Win7/8
- Auto 30 Landmark and 43 Measurements
- Auto diagnostic for arch type, hallux valgus, and heel angle
- Mark landmarks on foot then drag points to locations
- Customizable foot report template with manual annotations
- Export to STL/WRL, JPG/PNG, PDF report, CSV data files
- FTP send order to shoe/insole fabrication
- Customize UI skin and icon color for a different look
- Customize software logo, sell your own brand
- Customize UI language to your local language
- After save directly open your own website
- Developers: CMD/EXE call scanner to receive data-
integration into your own CAD software and database
- Encrypt scanners to lock file format

XPOD-SS Standard Configuration

- Included: Scanner body, USB2.0 Cables (X2), Power Adapter (12V5A), and software license dongle (blue)
- User supply: Laptop or desktop PC with keyboard/mouse/monitor (1080P or better)



XPOD-SS Pedestal Configuration

- Included: Scanner body, USB2.0 Cables (X2), Power Adapter (12V5A), software license dongle (blue), and Pedestal
Pedestal has VESA mounting holes (100X100mm) for PC and monitor
Mini-PC to be mounted behind the monitor
Pedestal is disassembled to reduce shipping size. Weight is 5KG
- User Supply: Touch Monitor (1080P or better), Mini-PC (Intel NUC 8th, 10th, 11th Gen or equivalent)

