



www.scanpod3d.com

UPOD-S 3D Laser Full-Foot Scanner

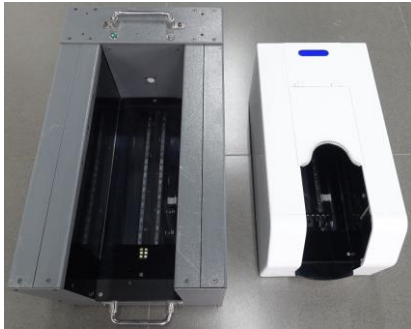
2019.01.11

Fast true 3D laser scan with color texture

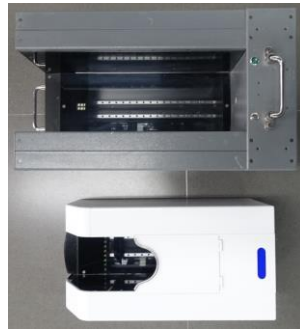
Auto landmark, measurement, and diagnostic

Custom shoes and orthotic insoles for foot clinics and retail stores

Smallest/Lightest/Fastest/Prettiest...3D Full-Foot Scanner in the world



UPOD vs UPOD-S



UPOD vs UPOD-S

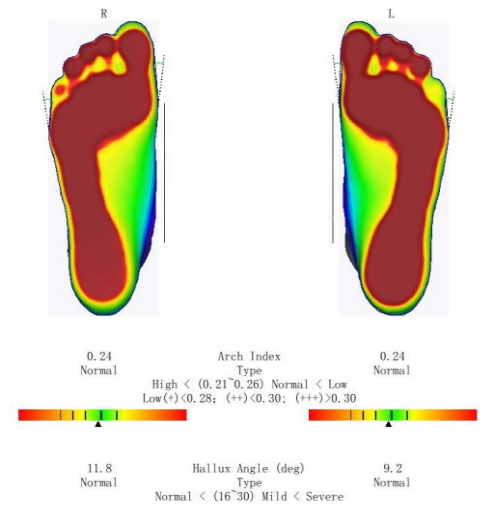
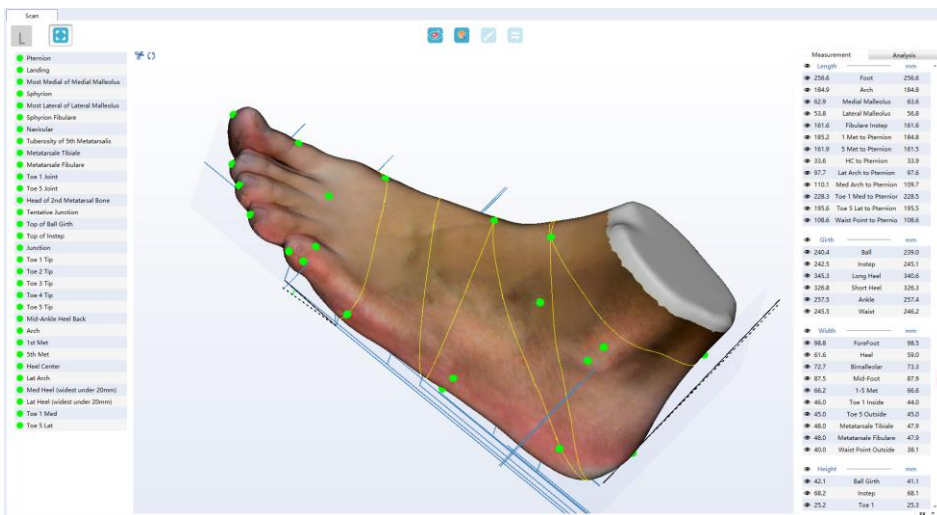
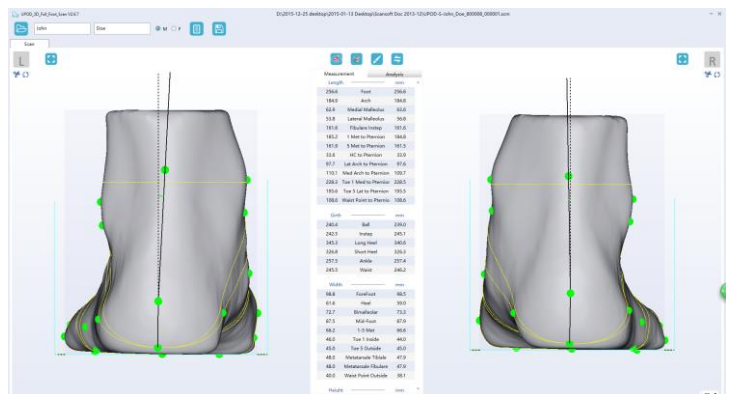
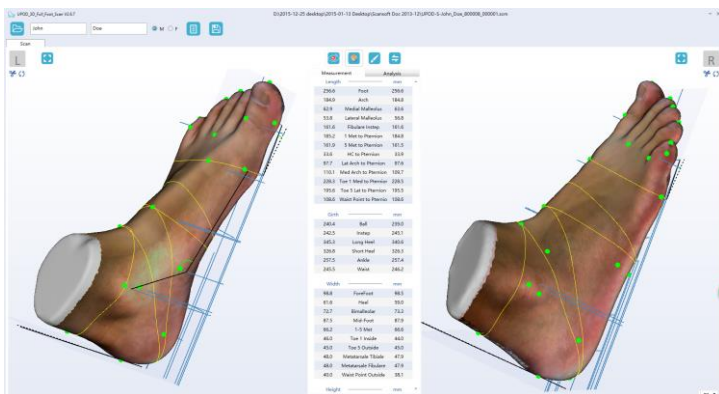
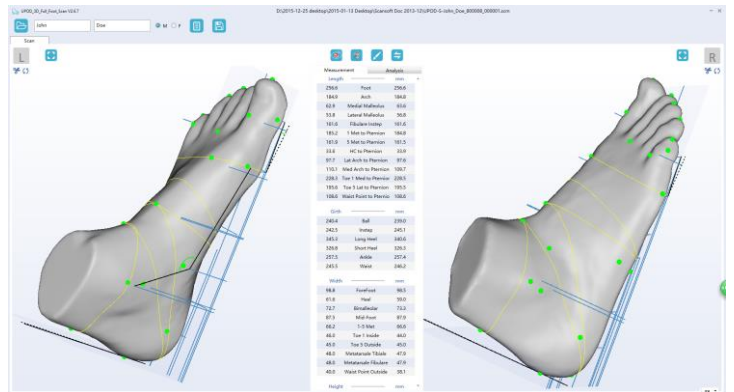
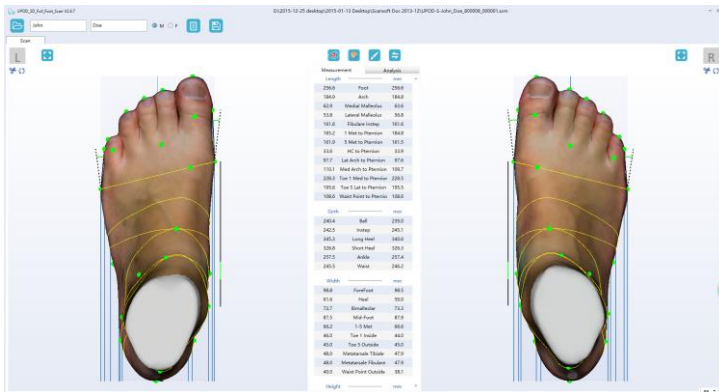


UPOD-S



UPOD-S

UPOD Software UI is elegant, intuitive, yet powerful



UPOD-S Hardware

- Full-foot 3D with color in non/semi/full-weight
- Foam Impression and Plaster Cast
- Speed 3.2s one-way for 3D
- Low PC requirement, i5-6200U 4G ram minimum
- -Integrated GPU OK, no need dedicated GPU
- Software UI or Foot switch to activate scan
- Normal indoor lighting, no dark room
- Clean 3D mesh, +/- 1.0mm accuracy
- Scan Volume 330L X 130W X 115H mm
- Size: 520L X 270W X 220H mm
- Weight: 10Kg (22Lb); Easily move around
- Load Capacity: 130 Kg (290Lb)
- Power adapter AC 100-240V; DC 12V/3A
- Customizable panels design and color
- CE/FDA/PSE certification/registration
- One-year limited warranty

Standard UPOD Software

- Win10 only, doesn't support Win7/8
- Auto 30 Landmark and 43 Measurements
- Auto diagnostic for arch type, hallux, and heel
- Mark landmarks on foot then drag points to match
- Foot report with manual annotations
- Export to STL/WRL, JPG/PNG, PDF report, CSV data files
- FTP send order to shoe/insole fabrication
- Customize software logo, sell your own brand
- Customize UI language to your local language
- Customize RX form for custom shoe/insole
- Developers: CMD/TCP call scanner to receive data-
- -integration into your own CAD software and database
- Encrypt scanners to lock files
- Custom software development
- Wechat/Facebook integration (to be finished...)

UPOD-S Laptop Configuration

- Included: Scanner body, USB2.0 Cable, Power Adapter, Foot Switch, Side standing steps, and software license dongle
- User supply: Laptop or desktop PC with monitor/keyboard/mouse. Recommend CPU i5-6200U, 4~8G ram, and 1080P display.
- Optional: 24-inch rolling case. Total travel weight 15Kg (33Lb). This is optional because the user can buy this locally.



UPOD-S Pedestal Configuration

- Included: Scanner body, USB2.0 Cable, Power Adapter, Foot Switch, Side standing steps, software license dongle and Pedestal. Pedestal has VESA mounting holes (100X100mm) for PC and monitor. Mini-PC to be mounted behind the monitor. Pedestal is disassembled to reduce packing size. Weight is 5KG.
- User Supply: Mini-PC and Touch Monitor. Recommend CPU i5-6200U Ram 4~8G or better, and 1080P touch monitor.
- Optional: We supply Mini-PC with Touch Monitor. These are optional because the user can buy these locally

