



www.scanpod3d.com

USOL-X 3D Laser Foot Planar Scanner

2019-01-03

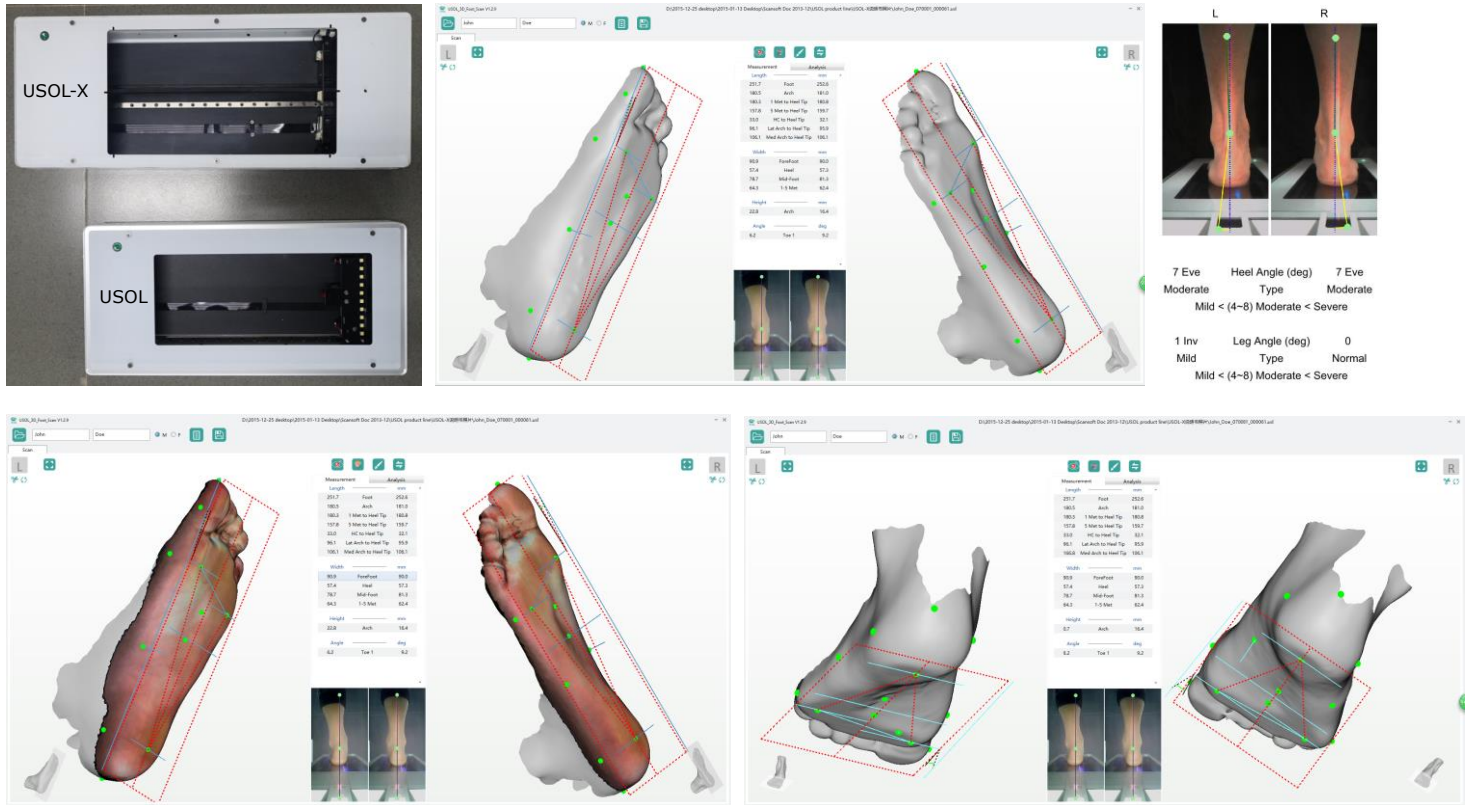
USOL-X provides more foot side 3D data than USOL.

Fast true 3D laser scan. Auto landmark, measurement, and diagnostic.

Custom shoes and orthotic insoles fabrication for foot clinics.

Prefab shoes and orthotic insoles selection for retail stores.

USOL-X Scans more foot side 3D Data than USOL.



Foot sides scan height up to 80mm; Heel back scan height about 20mm.

USOL-X Features are the same as USOL (check USOL Factsheet), except

Size/Weight 600*230*69 MM/5.0KG. USOL Size/Weight 490*230*69 MM/4.7KG.

Scan Speed 4.9s/6.9s on minimum i5-6200U/Z8350. USOL Scan Speed 1.9s/2.9s.

Doesn't scan concave surfaces (foam box or plaster cast internal). USOL does.

USOL	USOL-DUO	USOL-X
1 foot	2 foot	1 foot
1 Camera	2 Camera	2 Camera
2 Laser	4 Laser	4 Laser

USOL-X Configurations are the same as USOL

USOL-X Standard: Scanner, Power Adapter, USB Cable (White), Foot Switch, Heel Camera (folding with laser).

USOL-X Floor: USOL-X Standard + Toe Laser, Side Steps (Pair).

USOL-X Vertical: USOL-X Standard + Toe Laser, Folding Frame (with wheels) and VESA Bracket.



USOL-X Standard

USOL-X Floor

USOL-X Floor

USOL-X Floor



USOL-X Floor

USOL-X Floor



USOL-X Vertical →