



# XPOD-SS 3D Laser Full-Foot Scanner

2021.02.04

Fast true 3D laser scan of both feet with color texture.

Auto landmark, measurement, and diagnostic

Custom shoes and orthotic insoles for foot clinics and retail stores

[www.scanpod3d.com](http://www.scanpod3d.com)

XPOD-SS supersedes UPOD-SS and UPOD-DUO



UPOD-SS vs XPOD-SS



XPOD-SS

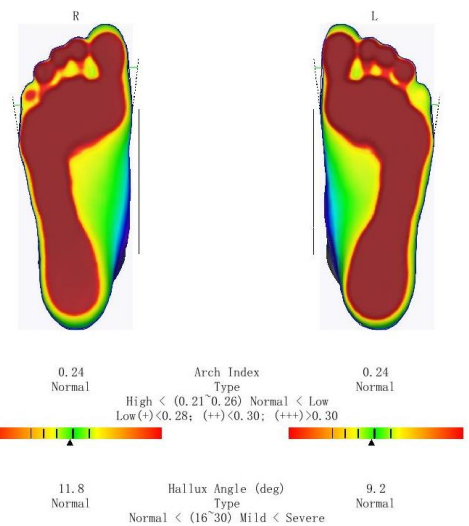
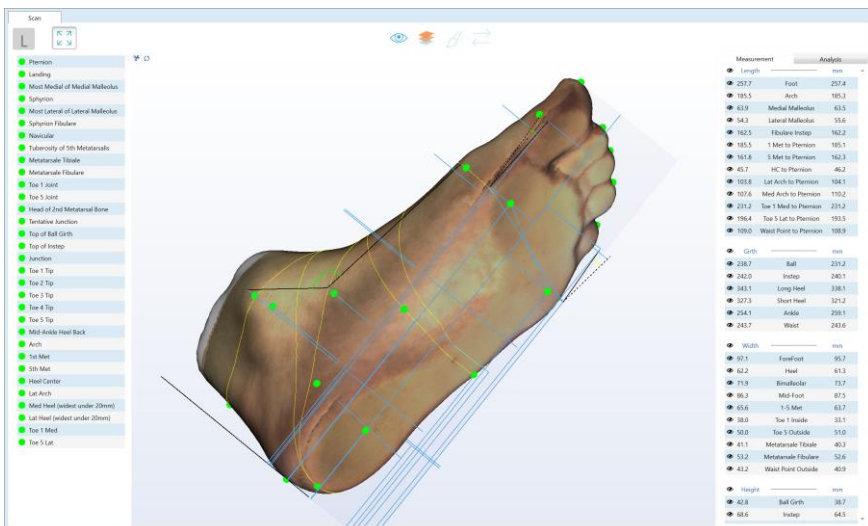
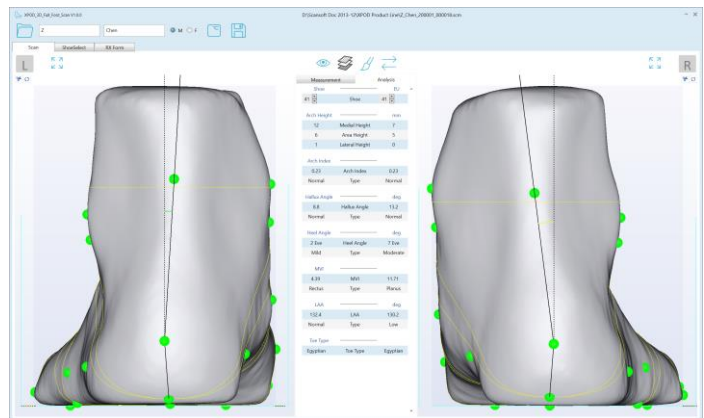
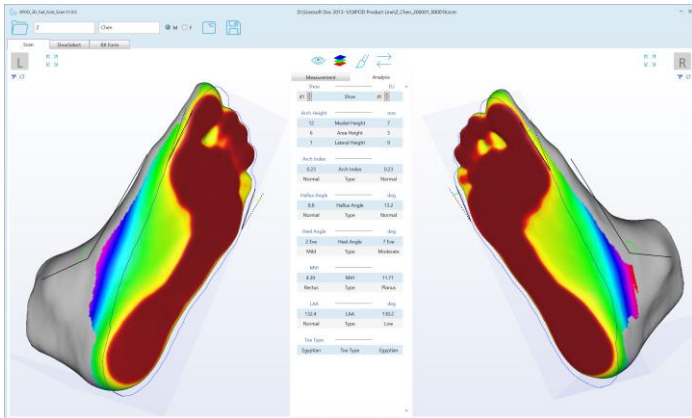
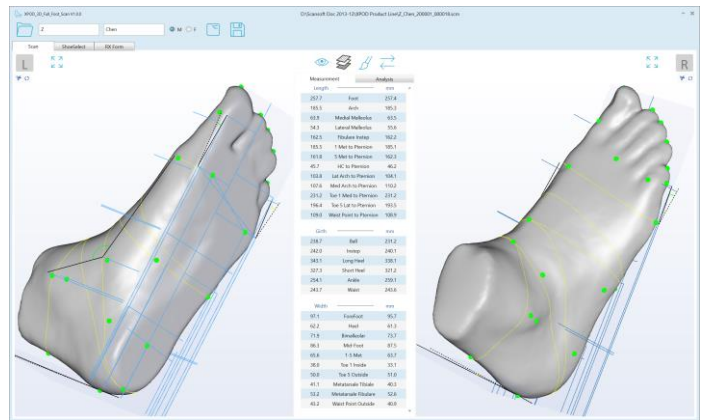


XPOD-SS



XPOD-SS

XPOD Software UI is elegant, intuitive, and highly customizable



## XPOD-SS Hardware

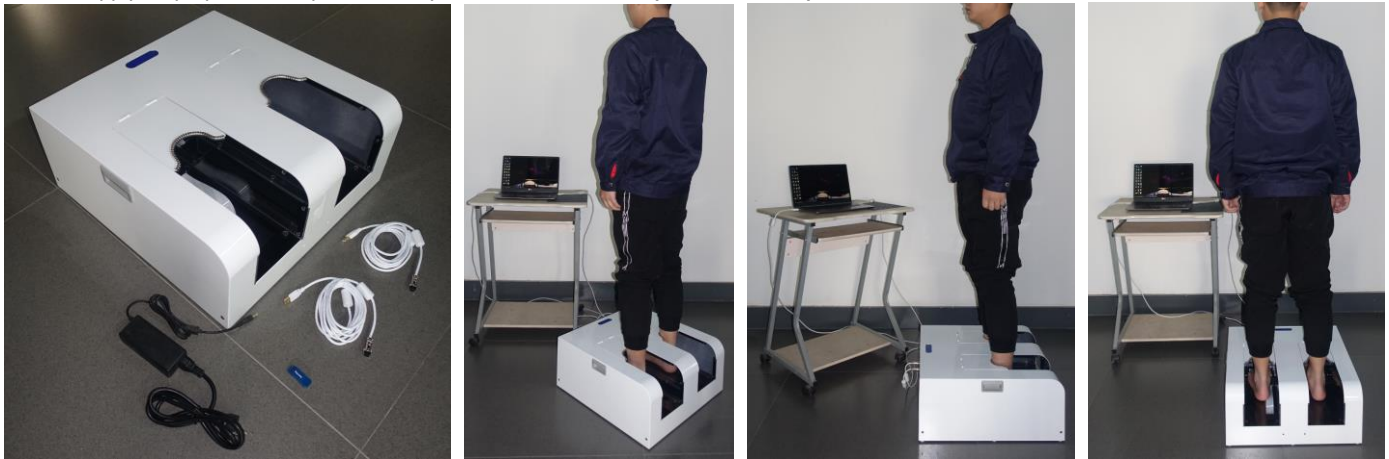
- Full-foot dual-foot 3D with color non/semi/full-weight
- Foam Impression and Casts; shoe last within 330mm
- Speed 3.2s one-way for 3D for both feet
- PC i5-6200U 8G minimum; i5-8250U/1135G7 16G better  
No requirement on GPU. Integrated GPU OK  
At least 2 separate USB2.0 -A or -C ports
- Normal indoor lighting, no dark room
- Clean 3D mesh, +/- 1.0mm accuracy
- Scan Volume 330L X 130W X 115H mm
- Size: 520L X 510W X 220H mm
- Weight: 16.5Kg (37Lb)
- Load Capacity: 180 Kg (400Lb)
- Power adapter AC 100-240V; DC 12V/5A
- Customizable panels design and color
- CE/FDA/PSE/BIS certification/registration
- One-year limited warranty

## Standard XPOD Software

- Win10 only, doesn't support Win7/8
- Auto 30 Landmark and 43 Measurements
- Auto diagnostic for arch type, hallux valgus, and heel angle
- Mark landmarks on foot then drag points to locations
- Customizable foot report template with manual annotations
- Export to STL/WRL, JPG/PNG, PDF report, CSV data files
- FTP send order to shoe/insole fabrication
- Customize UI skin and icon color for a different look
- Customize software logo, sell your own brand
- Customize UI language to your local language
- After save directly open your own website
- Developers: CMD/EXE call scanner to receive data-  
integration into your own CAD software and database
- Encrypt scanners to lock file format

## XPOD-SS Standard Configuration

- Included: Scanner body, USB2.0 Cables (X2), Power Adapter (12V5A), and software license dongle (blue)
- User supply: Laptop or desktop PC with keyboard/mouse/monitor (1080P or better)



## XPOD-SS Pedestal Configuration

- Included: Scanner body, USB2.0 Cables (X2), Power Adapter (12V5A), software license dongle (blue), and Pedestal  
Pedestal has VESA mounting holes (100X100mm) for PC and monitor  
Mini-PC to be mounted behind the monitor  
Pedestal is disassembled to reduce shipping size. Weight is 5KG
- User Supply: Touch Monitor (1080P or better), Mini-PC (Intel NUC 8<sup>th</sup>, 10<sup>th</sup>, 11<sup>th</sup> Gen or equivalent)

